

TRX-OP™ Surgical Kit & Prosthetics

One-Piece - Immediate Loading Implants

TRX-OP™ 2.8 & 3.7mm Prosthetics

OP-HC - Nylon Healing Cap for TRX-OP 2.8 & 3.7mm



OP-IL - Implant Analog for TRX-OP 2.8 & 3.7mm



OP-TC - Nylon Impression Coping for TRX-OP 2.8 & 3.7mm



TRX-OP™ 4.5mm Prosthetics

LP-HC - Nylon Healing Cap for TRX-OP 4.5mm



LP-IL - Implant Analog for TRX-OP 4.5mm



LP-R - Nylon Impression without Square Coping for TRX-OP 4.5mm



LP-S - Nylon Impression with Square Coping for TRX-OP 4.5mm



LP-TC - Nylon Impression Coping for TRX-OP 4.5mm



Surgical Kit

Burs & Drills

RB - 2.0mm Round Bur

NX-LD-20T - 2.0mm Lindeman Bur

NX-TLD-20T - 2.0 mm Lance Drill

CSD - Implant Countersink



PD200L16C - 2.0mm Carbide Implant Drill
 TD220L16C - 2.2mm Carbide Implant Drill
 TD250L16C - 2.5mm Carbide Implant Drill
 TD280L16C - 2.8mm Carbide Implant Drill
 TD320L16C - 3.2mm Carbide Implant Drill
 TD365L16C - 3.65mm Carbide Implant Drill
 TD400L16C - 4.0mm Carbide Implant Drill



Cassette

MISK - Mini Implant Surgical Kit



TRX-OP-2.8



TRX-OP-3.7



TRX-OP-4.5

TRX-OP™ Implant Sizes

DIAMETER	LENGTH	SKU
2.8mm	10mm	TRX-OP-2.8-10
2.8mm	13mm	TRX-OP-2.8-13
3.7mm	10mm	TRX-OP-3.7-10
3.7mm	13mm	TRX-OP-3.7-13
4.5mm	10mm	TRX-OP-4.5-10
4.5mm	13mm	TRX-OP-4.5-13

Implant Drivers

XOT-S - Short Implant Driver for TRX-OP 2.8, 3.7mm



XOT-L - Long Implant Driver for TRX-OP 2.8, 3.7mm



TIT-S - Short Implant Driver for TRX-OP 4.5mm



TIT-L - Long Implant Driver for TRX-OP 4.5mm



Ratchets & Attachments

DL - Drill Extension



RAD - Hex to Square Adapter



HR - Hex Ratchet



HR-S - Square Ratchet



HR-TW - Hex Torque Wrench

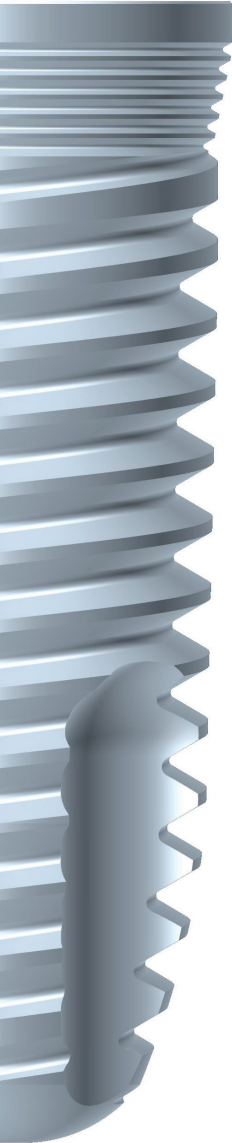


XTR - Mount Remover



PT - Paralleling Tool





Integrated Surface™ Characteristics

Hi-Tec Implant's™ Integrated Surface™ is an SLA macro/micro implant surface, which is applied to the implant by large grit blasting, followed by a process of acid treatments. This results in a porous osseο-conductive surface that is an ideal platform for cell attachment. This process increases implant to bone contact and facilitates bone formation and superior osseο-integration.

Macro Surface

A macro surface is achieved by blasting the implant with 60 micron large grit particles that create pores 10-30 microns wide. The topography of the surface is 10 microns from peak to valley. This significantly increases the implant surface area and the retention on the implant. The macro pores contribute to initial stability, shortened healing time, and provide ultimate load bearing capacity.

Micro Surface

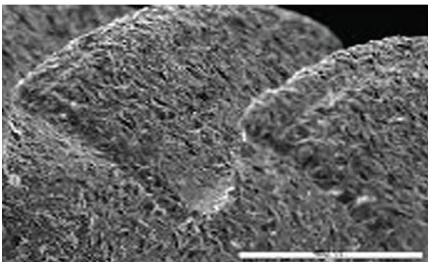
The micro-texture is created by chemical processes and is characterized by micro grooves of 0.503 microns. The micro voids are osseο-conductive and facilitate bone formation for faster osseο-integration and mechanical interlock between the bone and the implant.

Surface Composition

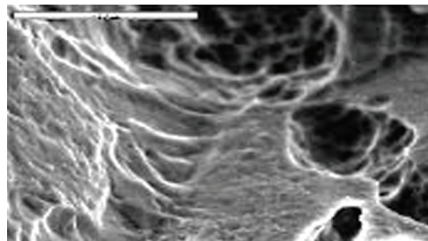
Surface composition analyzed by scanning electron microscopy presents a titanium oxide surface layer with a composition of 50% oxygen at the surface. Auger Spectron spectroscopy demonstrates that the depth of the titanium oxide layer is 200 angstroms.

Predictable Performance

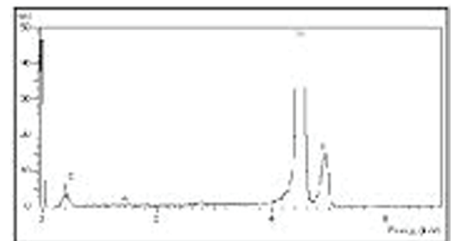
SLA technology has a long history of proven effectiveness as one of the most documented surfaces in dental technology. Hi-Tec Implant's™ Integrated Surface™ has extensive healing potential, which results in accelerated osseο-integration. This makes the healing process more predictable for both you and your patient.



SEM SCANNING ELECTRON
MICROSCOPE x 100



SEM SCANNING ELECTRON
MICROSCOPE x 5000



SURFACE COMPOSITION BY SEM



Hi-Tec Implants™ meets and exceeds the highest standards in the field of medical devices: the main approvals, besides many others, are:

FDA APPROVAL: Center for Devices and Radiological Health in the US FDA (Food and Drug Administration) Since 1994.

CE MARK – After demonstrating compliance with Annex II of Medical Devices Directive 93/42/EEC, entitles us to use CE Marketing on our products.

ISO 13485: 2003 – An international standard for quality management of medical devices, Hi-Tec Implants LTD™ meets the requirements of ISO 13485 : 2003 for the design, manufacturing and inspection of dental implants and accessories.

ISO 9001: 2000 – Certifies that Hi-Tec Implants LTD™ demonstrates compliance of our quality system to meet the requirements of ISO 9001: 2000 (an international standard for quality management system).

Health Canada Medical Device License and CMDCAS ISO 13485: 2003 Accredited Since 2005.